



## *Shabbat of Song* **Synaplex**

**January 10th, 2014**

### **Grammy Award Winning Performers on Shabbat Shira**

The music of synagogue life flourishes throughout the year but is featured on a special Shabbat we call Shabbat Shira. For it is on this Shabbat that we celebrate the Israelites escaping from the captivity of Egypt, crossing the Red Sea and celebrating their freedom through music and dance.

To honor that moment our Synaplex on January 10th, 2014 will feature

**C. Lanzbom and Noah Solomon,**

***two critical members of the acclaimed band Soulfarm.***

For more details about this special evening and to sign up for dinner **see page 15.**

**Don't forget to save these dates for 2014 Synaplex events:**

**Friday, February 28**

*A Conversation with scientists Nir Barzalzi and Francine Einstein,  
"From Womb to Tomb: Looking for the Secrets for Healthy Longevity"*

**Saturday, March 15**

*A Purim Extravaganza for all including the Purim Spielers' performance of "Les Miz - Les Megillah"*

**Friday, May 9**

*The People v The Macabees: Heroes or Religious Fanatics*

## SERVICES

## Friday, January 3

5:30 pm SHABBAT IN THE WOODS in Gallery

6:15 pm SHABBAT EVENING SERVICE in Sanctuary

## Saturday, January 4

SPIRITUAL LIFT in Chapel

9:00 am Coffee and community

9:30 am Study

11:00 am SERVICE

## Friday, January 10

5:00 pm SYNAPLEX – SHABBAT SHIRA

5:30 pm SHABBAT IN THE WOODS in Gallery

6:15 pm SHABBAT EVENING SERVICE in Sanctuary

## Saturday, January 11

SPIRITUAL LIFT in Chapel

9:00 am Coffee and community

9:30 am Study

11:00 am SERVICE

5:30 pm SHABBAT AFTERNOON SERVICE: Bat Mitzvah of Hailey Faust in Sanctuary

## Friday, January 17

5:30 pm SHABBAT IN THE WOODS in Gallery

6:15 pm SHABBAT EVENING SERVICE in Sanctuary

## Saturday, January 18

SPIRITUAL LIFT in Chapel

9:00 am Coffee and community

9:30 am Study

10:30 am SHABBAT MORNING SERVICE: Bat Mitzvah of Charlotte Brown in the Chapel

## Friday, January 24

5:30 pm SHABBAT IN THE WOODS in Gallery

6:15 pm SHABBAT EVENING SERVICE in Sanctuary

7:00pm PRIDE DINNER

## Saturday, January 25

SPIRITUAL LIFT in Chapel

9:00 am Coffee and community

9:30 am Study

11:00 am SERVICE

3:30 pm 4TH GRADE HAVDALLAH HISPANICA

## Friday, January 31

5:30 pm SHABBAT IN THE WOODS in Gallery

6:15 pm SHABBAT EVENING SERVICE in Sanctuary

6:15 pm 3RD GRADE FAMILY SHABBAT &amp; DINNER

## Saturday, February 1

SPIRITUAL LIFT in Chapel

9:00 am Coffee and community

9:30 am Study

10:00am 6TH GRADE B'NAI MITZVAH WORKSHOP, SHABBAT &amp; BRUNCH

11:00 am SERVICE

4:00 pm WINE AND WISDOM

5:30 pm SHABBAT AFTERNOON SERVICE: Bat Mitzvah of Eva Gilbert in Sanctuary

Weekly Torah Portions  
for January

## Week ending January 4, 2014

**Parashat Bo Exodus 10:1-13:16**

This *parasha* begins with a reiteration of God's challenge to Pharaoh to change his behavior while at the same time making it more difficult for him to do so. It concludes with the freeing of the Israelites from bondage. God tells Moses and Aaron that the people must remember how God freed them from bondage.

## Week ending January 11, 2014

**Parashat B'shalach Exodus 13:17-17:16**

Pharaoh finally releases the Israelites from Egypt, only to change his mind again and chase after them with a force of 600 chariots. God parts the waters at the Sea of Reeds, and the Israelites are freed from slavery once and for all. The Egyptians who are pursuing them are drowned as the Sea of Reeds once again closes. The liberated Israelite slaves celebrate once they are safe on the other side, and are led by Moses' sister Miriam in singing and dancing *Mi Chamocha*.

## Week ending January 18, 2014

**Parashat Yitro Exodus 18:1-20:23**

Yitro, also known as Jethro, is Moses' father-in-law. He observes the toll that Moses' leadership of the Hebrews is taking and advises Moses to delegate some of the responsibility and authority. In this *parasha*, the people find themselves at the base of Mount Sinai after several weeks of wandering. This is where God gives Moses the Ten Commandments.

## Week ending January 25, 2014

**Parashat Mishpatim Exodus 21:1-24:18**

This *parasha* continues the Torah's presentation of Divine legislation (the Torah). The word *mishpatim* means "case laws" and many such rules - encompassing civil, criminal, and cultic regulations—are enumerated in this chapter. A covenant ceremony on Mount Sinai concludes this week's *parasha*.

## Fired Up and Positive

Only a few years ago, we regularly cited the statistic that one out of every six American children goes to bed hungry at night. Now it is one out of every four. Forty-seven million people live at or below the poverty line; more than half of those who receive food assistance are children. As Rabbi David Wolpe has noted, "Increasingly in modern society we do not see the poor in our daily lives. Wealth insulates us. The grinding poverty that is a feature of so much of the world plays an increasingly small role in our everyday reality. That separation is call to conscience." In this hyper-connected age, we have access to more and more information—but we feel more and more helpless about affecting change in the world around us. It's not a good mix: knowing more and doing less. It eats away at our conscience and erodes our sense of what it means to be a human being—what it means to be alive on this planet.

I don't have solutions—but I am part of an amazing community:

you. We are convening a Sunday morning meeting of energetic, interested, imaginative, fired-up and positive people—to think together about one project we can get behind—get other people behind—and launch in the next few months.



This would be a great way to start a new year—and to make 2014 a different year than the one we are leaving behind. If you are interested in being part of this small but important group, please call me at 949-4717—or email me at shiramilgrom@nykolami.org.

*With wishes for a 2014 of blessings, gratitude and joys,*

*Shir*

## 8th Grade Trip to Boston – April 4-6, 2014



"So, all of our Bar and Bat Mitzvah services are over!! And the parties are over! What do we do now?!" The journey continues. It is now time to begin welcoming our 8th graders into our High School Program.

Step 1: On April 4-6th there will be the 8th Grade Trip to Boston with Rabbi Tom and Rabbi

Nadia, including junior staff made up of Kol Ami High School students, and college students from the Boston area.

The weekend will include a brief "Shabbat on the Bus" Friday night service; Havdalah on the banks of the Charles River; a Boston museum; Harvard Square and so much more.

But mostly our 8th graders will be having fun, deepening friendships, and seeing that indeed Bar and Bat Mitzvah really is only the beginning, the gateway into the exciting years of high school at Kol Ami. Details will follow shortly.

With love and excitement for a great trip to Boston,

*Tom*

## Grammy Award Winning Performers on Shabbat Shira

The music of synagogue life flourishes throughout the year but is featured on a special Shabbat we call Shabbat Shira. For it is on this Shabbat that we celebrate the Israelites escaping from the captivity of Egypt, crossing the Red Sea and celebrating their freedom thru music and dance. To honor that moment our Synplex on January 10th, 2014 will feature C. Lanzbom and Noah Solomon two critical members of the acclaimed band Soulfarm.

There are some musicians in this world who are fantastic in their particular genre and stay within what they believe to be their musical world. Then there are others who are able to cross over different genres all the while maintaining an extremely high level of musical expression and authenticity. C. Lanzbom and Noah Solomon fall into the latter category and we are honored to be one of the

very few reform synagogues that will benefit from their talents.

Grammy award winner C. Lanzbom has spent years as a studio and touring guitarist in the Middle East. C absorbed the Israeli-Arabic musical rhythms of the region, eventually fusing these ancient tones to the rock music he grew up with along the jersey shore. Coming back to the states, C pioneered a new brand of rock music where the sun sets and rises within the same song. With a huge list of playing, writing and producing records, from Shlomo Carlebach to Pete Seeger to MTV's The Real World, C continues to bring his unique music around the world. When he is not touring, C runs Engineer Sherwood Ridge Studio, a state of the art recording studio just north of New York City.

C Lanzbom met Noah Solomon in Jerusalem in the 1980's. The two have been in several bands together and have collaborated on several CD's including Butterfly, The Ride, Holy Ground and several others. Noah's lead vocals possess a soulful blend of rock and folk colors married to beautiful Jewish melody. Noah and C perform music that is a mix of mainstream rock, Middle Eastern, Blue Grass and Celtic. It is my hope that you will come on January 10th and benefit from their talents and spirits in helping us celebrate Shabbat Shira.



*C*

## From Our President: Thoughts from the Biennial

I just returned home from attending the Union for Reform Judaism's (URJ) Biennial Convention in San Diego, and I wanted to share some thoughts and experiences with you. Every two years, the URJ holds the Biennial, which is a 5 day gathering of the Reform Movement which features a myriad of educational, musical and worship opportunities. Kol Ami was well represented this year by Cantor Mo Glazman, Cantor Jonathan Comisar, Felice Baritz, Marc Baritz, Lisa Borowitz, Ellen Bittner, Bob Asher, Judy Asher and Jean Rouda. But Kol Ami's presence was felt beyond just the people I listed, as Kol Ami alums (including Rabbi Rachel Maimin, Rabbi Dara Frimmer and Cantor Galit Dadoun Cohen among many others) were everywhere!

The underlying theme of almost every presentation that I attended was "relationships". The emphasis on relationships is fundamental to enabling the synagogue meet the needs of its congregants as they need the synagogue. It's not enough to foster a "one size fits all" mentality, as our different generations use institutions, such as a synagogue, in dramatically different ways. The Baby Boomers and the Millennials want and need things that reflect their radically divergent view of the world. Fortunately, we at Kol Ami have already been fostering this type of attitude.

As we are all aware, we are blessed with extremely talented and creative clergy. This talent was on center stage at the Biennial, when Cantor Jonathan Comisar presented a piece that he wrote specifically for the Biennial to honor the 60th anniversary of the American Conference of Cantors. Jonathan performed the piece on piano while a choir of dozens of the Movement's best cantors sang his inspirational words. Kol Ami was honored to have the first solos performed by Cantor Mo Glazman and Cantor Galit Dadoun Cohen. Jonathan, as always, delivered an inspiring and beautiful work of art.

The worship experience was extremely varied and reflects the breadth of ways that one can experience the divine presence. One morning featured tai chi prayer while on another morning the Marines led a Morning Boot Camp that blended mind, body and spirit. Shabbat morning started with a variety of experiences designed to prepare you for services. Jean and I attended a session entitled "Opening the Heart in Gratitude and Song". The gentle melody sung throughout by Cantor Richard from Temple Emanu-El in Dallas

accomplished its goal. For those of you who attended a URJ summer camp, you would have been prepared for what happened next – dozens of song leaders were stationed on the way as we made our way to the main hall to worship together. The sound of hundreds of people singing "Hallelujah" as they streamed together from all different parts of the convention center was truly amazing. But we were just warming up!

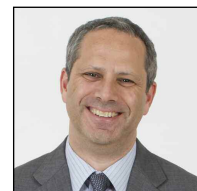


Photo by Mariela Melamed

Services (for almost 5,000 people!) were led by Rabbi Rick Jacobs, the President of the URJ, and Rabbi Angela Buchdal, the new senior Rabbi at Central Synagogue in Manhattan. Throw in Rabbi David Ellenson, the retiring President of HUC-JIR, delivering a stirring d'var torah, and you have the makings of an unbelievable service! The torah service was so very special. They had set up 13 different bimot throughout the hall and each portion of the parsha was read by someone at each of those bimot. What an unbelievable sound to hear 13 different people chanting the same portion at the same time in such different voices. The service was made even more spherical, because most of our contingent was honored to have an aliyah. Shabbat ended with a celebration of Women of Reform Judaism's 100th Anniversary followed by a very spirited song session.

So, what did I take away from this experience? First, that Kol Ami is truly a special place with deeply devoted clergy, caring leadership, a diverse and connected membership, truly spiritual worship experiences, and fantastic programming. But still, if we sit back and simply compliment ourselves on what we do right, we miss the opportunity to do even more. To connect with even more of our members. To reach people as they live their lives today. To address peoples' needs in a personally meaningful manner. The clergy and leadership will be taking these lessons and seeing how we can use them at Kol Ami. We welcome your input as we continue to build on our relationships.

L'shalom,

*Blame*

## From the Religious School

"Happy Birthday to you, happy birthday dear...tree?" Happy New Year! In our Jewish tradition we experience a new year multiple times in the course of just one year, from the secular to the religious. And just as we are marking the start of 2014, another new year is only two weeks away: Tu B'Shvat. Tu B'Shvat is the birthday of the trees, a new year for growing, planting and fruit; a time when buds are first appearing on trees in Israel and eagerly watched for signs of spring and bounty. For many years, Jews outside of Israel made perhaps their only connection to Tu B'Shvat by planting a tree in Israel through JNF. That blue and white tzedakah box was a prominent symbol for our parents, grandparents and even many of us. Today Tu B'Shvat understandings have expanded to emphasize an awareness of the world around us, caring for our planet, recycling and ecological ethics.

But do all of our children know about planting a tree in Israel?

Planting a tree together as a family—or supporting JNF water projects and other green initiatives—is a wonderful way to connect to Israel in honor of Tu B'Shvat. Let your child explore the JNF website and find what intrigues them...and perhaps plant a tree. On my last visit to Israel, with certificate number in hand indicating the tree my mother planted in the 1950s, I stood in the Biriya JNF Forest. There was our tree, standing in honor of my great-grandfather. Trees have been planted for each of my children in honor of becoming Bat and Bar Mitzvah and I look forward to knowing that one day, I will stand with each of them before that tree. We are connected to the land, always...and remembering those trees on Tu B'Shvat, making sure we give again each year at this time, makes us ever a part of our never-ending chain.

To explore how you can give in honor of Tu B'Shvat, go to [www.jnf.org](http://www.jnf.org)



CONGREGATION  
**KOL AMI**

**WELCOMES & INVITES**  
**MEMBERS OF THE**  
**LGBT COMMUNITY & THEIR**  
**FRIENDS & FAMILY**  
**TO**  
**SHABBAT DINNER &**  
**A DISCUSSION OF THE WAYS**  
**KOL AMI CAN MOVE FORWARD**  
**IN BECOMING EVER MORE**  
**INCLUSIVE**

**FRIDAY NIGHT JANUARY 24TH**  
**SERVICES: 6:15**  
**DINNER: 7:30**

R.S.V.P. BY JANUARY 21ST.  
TO STU SORELL [STUSO414@YAHOO.COM](mailto:STUSO414@YAHOO.COM)

# Congratulations



**HAILEY OLIVIA FAUST**, daughter of Jon and Nancy and terrific big sister to Carly (and her dog Daisy), will be called to the Torah as Bat Mitzvah on January 11, 2014. Hailey is a seventh grader at the Edgemont Junior -Senior High School. For Hailey's Mitzvah project, she has been working with "Focus for a Future", an organization that helps less privileged children have the opportunity to go to sleep-away camp. She has been raising money and collecting essential items for these kids. She is also working with the directors to properly prepare kids for their summer experience. Hailey loves volleyball, lacrosse, acting, singing and baking with her friends and family.



**CHARLOTTE ANNABEL BROWN**, daughter of Jim and Alix Brown and sister to Jack and Max, will be called to the Torah as Bat Mitzvah on January 18, 2014. Charlotte is a 7th grader at Edgemont Junior-Senior High School. She has chosen to devote her volunteer time and efforts to dealing with issues of hunger, from raising awareness and funds, to participating in Kol Ami's Cooking for the Homeless and helping out at the HUC Soup Kitchen. Too many people go hungry every day, even though there is more than enough food available to feed all in need. Right here in our community, both children and adults go to bed hungry every night and suffer from malnutrition. Charlotte hopes to make a difference, even in small ways, and that you will join her in taking a stand against hunger.

## Junior Youth Group Events

### 5th/6th Grades

**January 25**, 4-6 PM, Bowling at AMF Bowlmor Lanes,  
47 Tarrytown Road at 4:00pm and pick up from Bowling alley at 6:00pm.  
Cost? \$18 per person (includes food)

**February 7-8** Temple Sleepover at Kol Ami!

### 7th/8th Grades

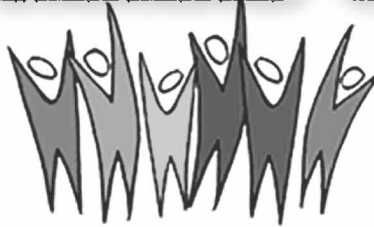
**January 25** (for 8th graders ONLY) Westchester Teenpalooza at Westchester Reform Temple  
(more info to follow)

**January 26** Kids Kloset: Lunch at Kol Ami- 11:00-11:40am  
Helping out at Kids Kloset – 12:00-1:30pm

RSVP [rabbiniadiagold@gmail.com](mailto:rabbiniadiagold@gmail.com)

**Save the Date!**

# MUSIC OF FREEDOM



The Interfaith Connection  
*and*  
Westchester Martin Luther King, Jr.  
Institute for Nonviolence

*Present*

**A Festive Community Gathering  
in Honor of  
Rev. Dr. Martin Luther King, Jr.**

**SUNDAY, JANUARY 12, 2014 at 4:00 PM**

at Memorial United Methodist Church  
250 Bryant Avenue, White Plains, NY

*Performances by*  
Congregation Kol Ami Choir  
India Center Bhajans and Sitar  
Memorial United Methodist Church Choir  
Mt. Hope A.M.E. Zion Church Inspirational Choir  
Shinnyo-En Buddhist Temple Ceremonial Taiko Drums  
The Turkish Center Sufi Dervish

LIGHT REFRESHMENTS AFTER THE CONCERT.  
NO ADMISSION CHARGE. THERE WILL BE A FREE-WILL OFFERING.  
TRANSPORTATION AVAILABLE.

For information contact MLK Institute  
914-949-6555 or [info@mlkwestchester.org](mailto:info@mlkwestchester.org)

## From the Executive Director's Desk

Dear Friends,

On behalf of the entire staff I want to thank you for your sympathy and concern following Valerie's passing. All of us felt your support and it helped us to get through a very difficult time.

Many of you have asked if we were going to do something in Val's memory. Every spring Valerie commented on the beautiful flowering trees in the center oval outside of the Sanctuary. She would always ask me the name of the trees and I would go back to the design plan

to tell her they were Crepe Myrtle trees. It became a standing joke between us. So, we have decided to plant a Crepe Myrtle tree this spring outside the Sanctuary to honor her dedication to our Kol Ami Community

For those of you who would like to participate in this memorial please send your checks to Kol Ami and mark the envelope "memorial tree".

Jane

## Hosts Needed for Friends for Shabbat and Havdalah!

We can all agree that "Shabbat and Havdalah with Friends" has been a resounding success. In order to keep this wonderful tradition going we need more hosts and hostesses! Please contact Ilene Miller at [imillerkolami@gmail.com](mailto:imillerkolami@gmail.com) or 949-4717 x111 to select a date to host a meal! We thank everyone for their participation in these wonderful Shabbat experiences!

We are currently taking reservations for the following dinners:

### FRIDAY DATES

March 7th  
March 21st

### HOST/S

Lisa Borowitz  
Ellen Umansky



## Kol Ami Early Childhood Program

*Warm, Nurturing and Enriching*

**Registration for 2014-2015 Now Open**

*First Friends: A Toddler Program*

**2, 3, 4 and 5-Day 2's • 3, 4, and 5-Day 3's • Morning 4's**

**Full & Half-Day 4's • Extended Day Program for 3's & 4's**

***A Step Ahead! Our Pre-K program Designed for children turning 5 from September through December. See for yourself—nothing takes the place of a personal visit.***

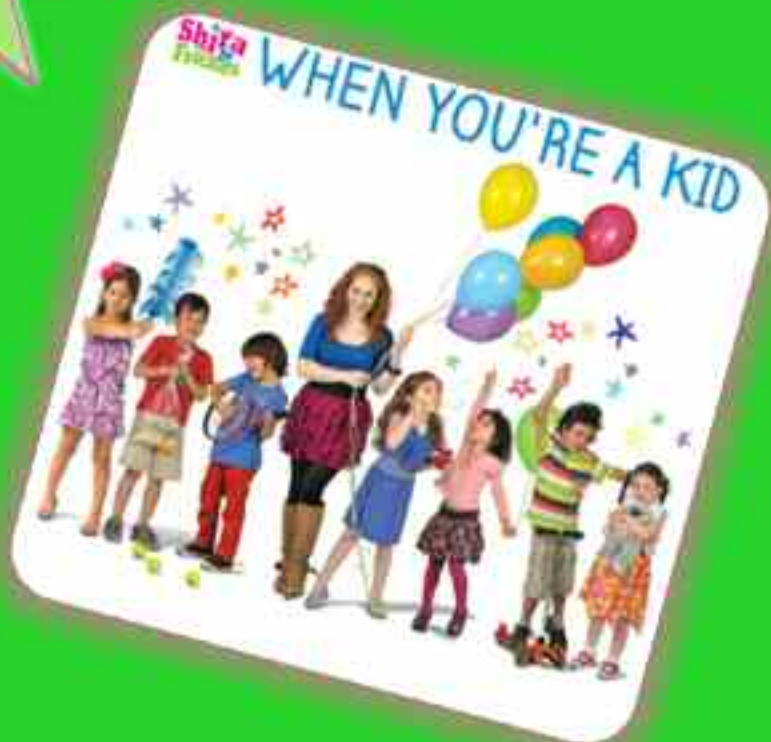
***Call for an appointment and tour today • Nan Blank, Director, at Ext. 107***

# January Family Concert

★  
**Shira**  
&  
**Friends**  
★

January 26, 2014 at 1:30 pm in the  
auditorium at Congregation Kol Ami

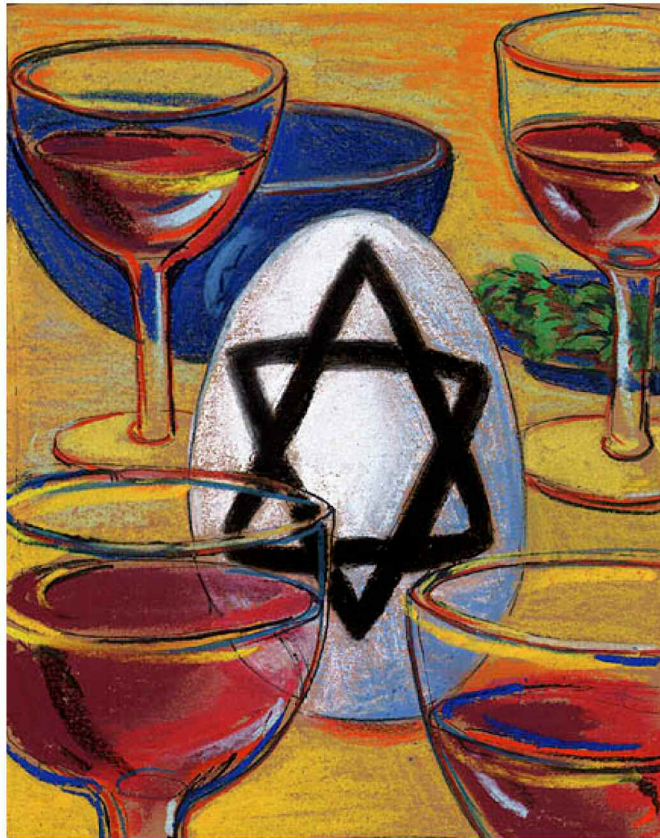
Tickets are \$5.00 for adults and  
children over 2 years old



Congregation Kol Ami 252 Soundview Avenue White Plains, NY

# The Kol Ami Sisterhood Havdallah Series *Presents*

## Wine & Wisdom with Rabbi Shira Milgrom



Saturday February 1st, 4-6pm  
at the home of Rabbi Shira Milgrom

Advance Registration: \$18 members/\$25 non-members  
After January 28th or at the door \$36

Register online at [www.NYKolAmi.org/Sisterhood](http://www.NYKolAmi.org/Sisterhood) or mail  
your check payable to Sisterhood to the main office.

**KOL AMI  
WOMEN'S  
OASIS AT  
HOME**



Rabbi Shira Milgrom will take us on a journey of self to explore all the ways we connect with the people in our lives. She will be joined by Rabbi Pamela Wax, WJCS Spiritual Care Coordinator, and Dr. Ellen Umansky, the Carl and Dorothy Bennett Professor of Judaic Studies and Director of the Dorothy Bennett Center for Judaic Studies at Fairfield University, CT.

**Register for the Oasis at Home Series Today!!**

☐ Yes, I would like to attend the Series.

☐ Four sessions \$60

☐ Individual sessions \$18

☐ Session 1      ☐ Session 3

☐ Session 2      ☐ Session 4

*Supplemental material will be provided and refreshments will be served at each session.*

# Women's Relationships: Many & Varied — Carefree & Complex

How we relate to the people in our lives reflected through Torah teachings and women's stories from the Bible.

## WOMEN'S RELATIONSHIP TO SELF

**How our self-image is shaped by religious tradition**

Tuesday, October 22, 2013

7:30-9:30 pm, location to be announced

## WOMEN & THEIR PARTNERS

**Who we love and how we love throughout our lives**

Joining us will be Pamela Wax, WJS Spiritual Care Coordinator

Please note new date: **Sunday, February 2, 2014**

9:15 – 11:00 am Schulman Chapel in the Woods

## WOMEN'S RELATIONSHIPS AS MOTHERS & DAUGHTERS

**Evolving through a lifetime**

Thursday, February 27, 2014

7:30-9:30 pm, location to be announced

## WOMEN'S FRIENDSHIPS & SIBLING RELATIONSHIPS

**Our allies and our rivals**

Sunday, April 27, 2014

9:15-11:00 am, Schulman Chapel in the Woods

TO REGISTER: please print this flyer and return the form with a check payable to "Kol Ami", and mail to Congregation Kol Ami, 252 Soundview Avenue, White Plains, NY 10606 or visit [www.nykolami.org](http://www.nykolami.org) to register online.

Name \_\_\_\_\_

Address \_\_\_\_\_  
\_\_\_\_\_

Email Address \_\_\_\_\_

Phone \_\_\_\_\_

For further information,  
call Jill Abraham 472-5806  
or Lauri Carey 472-8076.

## Ritual Riches: *Tu b'Shevat*

The “roots” of Tu b'Shevat can be found in the third book of the Torah. In Leviticus 19:23-25, the Israelites are told “When you enter the land and plant any tree for food, you shall regard its fruit as forbidden. Three years it shall be forbidden for you, not to be eaten. In the fourth year all its fruit shall be set aside for jubilation before God; and only in the fifth year may you use its fruit—that its yield to you may be increased.” In the fifth year - and all subsequent years—the farmer would be able to harvest the crop for his own use.

In order to determine how the “birthday” of a tree could be marked, the early Rabbis established the 15th day of the Hebrew month Shevat as a general “birthday” for all trees, regardless of when they were actually planted. By this time, the majority of the annual rainfall has usually fallen in Israel, providing a healthy, water-logged soil in which to plant new trees. The holiday, *Tu b'Shevat*, derives its name from its date. “Tu” is the pronunciation of the Hebrew letters (tet + vav) that have a numerical value of 15; and the holiday occurs in (b') the Hebrew month of Shevat. This year Tu b'Shevat falls on January 16th on our calendar.

In current times, Tu b'Shevat is considered to be a Jewish Arbor day or “Earth Day” that teaches about Judaism's attitudes towards responsible stewardship of God's creation. Some observe this holiday by planting trees and promoting environmental activism. It is also traditional to eat fruit associated with the land of Israel. Another custom is to eat a new fruit or to eat from the “seven species” The “seven species” mentioned in Deuteronomy 8:8 are wheat, barley, grapes (vines), figs, pomegranates, olives and dates (honey).

The new fruits of the season fall into four categories. The first, hard on the outside and soft on the inside, symbolizes the protection that the earth gives us and reminds us to nourish the strength and healing power of our own bodies. These include walnuts, coconuts, or

almonds. The second fruit is soft with a pit in the center (such as olives, dates, peaches, apricots, etc.) and symbolizes the life-sustaining power that emanates from the earth. It reminds us of the spiritual and emotional strength that is within each of us. The third fruit is soft throughout and is completely edible (figs, grapes, and raisins) and symbolizes God's omnipresence and our own inseparable ties with the earth. The fourth fruit has a tough skin on the outside but sweet fruit within (mangos, bananas, avocados, or sabra) and symbolizes the mystery of the world and the Torah.

Another tradition, developed by the Kabbalists, is the Tu b'Shevat seder. The seder begins with the recitation of the Shehecheyanu, thanking God for bringing us to this joyous time of celebrating rebirth and change. Modeled on the Passover seder, the Tu b'Shevat seder includes eating fruit and drinking four cups of wine. These cups of wine contain varying percentages of red and white wine, possibly representing the shifting of the four seasons. The seder may also include readings on trees and fruit from a range of Jewish literature. (Examples of Tu b'Shevat haggadot may be found at [coejl.org](http://coejl.org), [shamayim.org](http://shamayim.org), and [circleboston.org](http://circleboston.org).)

However you celebrate Tu b'Shevat, it is a time to reflect on our connection to the land of Israel, as well as to the land and nature throughout the world. You may wish to make a donation to the Jewish National Fund to support their planting trees in Israel or their other environmental projects ([information at jnf.org](http://information.at.jnf.org)).

Happy Birthday Trees!

*This article was written by Ellen Bittner.*

*Ritual Riches is a monthly column written by members of the Worship Committee. We hope you will find these articles interesting and informative.*

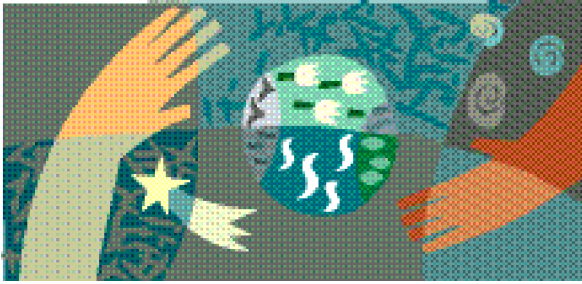
**GET ALL YOUR JUDAICA NEEDS AT**

# The Kol Ami Sisterhood Gift Shop

***In-person and On-line we offer it all***

Jewelry \* Tallit \* Music \* Imprinted Kippot \* Mezuzot  
Games \* Candle Sticks \* Cards \* Children's Books  
Challah Covers \* Kitchen & Tableware \* Holiday Items  
Wedding Gifts \* B'nai Mitzah Gifts

**Stop by anytime**  
**or visit us at [www.NYKolAmi/GiftShop](http://www.NYKolAmi/GiftShop)**  
When shopping online use coupon code: AF220 for \$5 off



## Kol Ami Cares

### *Opportunities for Volunteering*

Kol Ami Cares is the umbrella committee responsible for Social Action activities and providing support and mitzvot to those in need. You can choose to get involved once a year, once a month or once a week—we leave that to you.

**COOKING FOR THE HOMELESS** has been a popular program for years. You can just drop in, ready to lend a hand on Sunday or Monday mornings. The group welcomes new comers and you may come away with a new idea for recipes to make at home. Food is taken to a local shelter and you may find you make new friends in the kitchen.

**HOME VISITS** – We are developing a list of older congregants who would appreciate a visit in their homes. It breaks up their days and can be a great way to help someone stay connected with our community who may not have family nearby. If you know a congregant who may benefit from this program, please contact Betsy with their phone number and address and details of their confinement. We hope to have members who would take time once a week or once every other week to make a connection. This is an opportunity that would be open to High School students as well.

Thanks for your help with these and all our other programs.

Ginny Ruder – [ginnyruder@gmail.com](mailto:ginnyruder@gmail.com) 914-589-5283

Betsy McCormack – [betsymc@aol.com](mailto:betsymc@aol.com) 914- 960-9390

#### **KOL AMI SINGERS**

It's a mitzvah to bring an hour of music, companionship and smiles to those in need.

**Greenwich Woods, 1165 King Street, Greenwich, CT**

**Wednesday, January 22, 2014 at 2:30 pm**

Questions? Please contact Murray Shapiro, 946-7789

#### **COOKING FOR THE HOMELESS**

Meets in the Kol Ami Kitchen

Sundays at 11:00 am: 1/12; 2/9, 3/9; 4/27; 5/4; 6/1

Mondays at noon: 1/13; 2/24; 3/24; 5/19; 6/16

## Bequests Made Easy: Kol Ami's Legacy Fund

When making a bequest to the Kol Ami Legacy Fund, not all bequests are treated equally. Traditional IRAs and qualified retirement accounts like 401(k)s or 403(b)s ("retirement accounts") can be one of the best assets to use when making a charitable bequest as they generally provide the best tax planning opportunities.

As year end approaches, you may wish to consult with your tax-planning specialist to see if it makes sense for you to make a bequest to Kol Ami directly from your IRA, or to name the Kol Ami legacy Endowment Fund as a beneficiary of your IRA. This type of bequest is not taxable to the donor. By virtue of its tax-exempt status, Congregation Kol Ami is also not subject to income tax upon receiving distributions from retirement accounts.

Accordingly, if a donor's estate plan seeks to benefit both individuals and non-profit institution, it is most efficient, from a tax standpoint, to direct that the retirement distributions pass directly from the IRA to the institution (in this case, Kol Ami).

Naming The Kol Ami Legacy Fund as a beneficiary of your retirement account will have no bearing on your right to receive lifetime distributions but it can save your family significant estate and income taxes.

*This article is for information purposes only, and is not to be construed as tax advice. Please consult with your tax advisor or attorney on the above and all related tax matters.*



## WOMEN OF REFORM JUDAISM — The “Call On Me” Sisterhood

As this article is being written, the parasha is Sh'mot, the beginning of the Book of Exodus. In this parasha, Moses encounters “a bush all aflame, yet the bush was not consumed. Moses said, ‘I must turn aside to look at this marvelous sight, why doesn’t the bush burn up?’ When Adonai saw that he had turned aside to look, God called to him out of the bush, ‘Moses! Moses!’ He answered, ‘Here I am.’” (*Exodus 3: 2 – 4*). God then tells Moses that God will send Moses to Pharaoh and that Moses shall free God’s people, the Israelites, from Egypt. After arguing with Adonai about his suitability to be the leader of the people, Moses heeds the call. And the rest is history.

History and heeding the call are perfect themes for this month’s reflections on our Sisterhood. Many of you know that this year has been the Centennial Celebration of the WRJ (Women of Reform Judaism), formerly known as the National Federation of Temple Sisterhoods (NFTS). Carrie O. Simon heeded the call of the Union of American Hebrew Congregations (now Union for Reform Judaism, URJ) to become the first NFTS President on January 21, 1913, during an historic period in the struggle for women’s rights. 156 delegates from 52 Sisterhoods attended the first NFTS Board of Directors meeting; they, too, answered the call along with Eleanor Schwartz, the first Associate Director of NFTS and Jane Evans, the first Executive Director.

Over the course of the 20th century, WRJ was at the forefront of social action and change in both Jewish and secular venues. In the tumultuous early years of the century, WRJ:

- embraced relief efforts during World War I;
- defended the needy during the Depression;
- brought German rabbinical students to the U.S. after Hitler closed the doors of Jewish academies;
- advocated for refugees and displaced persons before and during World War II;
- defended the right of Jews to resettle in Palestine after the war; and
- actively participated in the formation of the United Nations and its Charter.

Although marred by war and rioting, the ‘50s and ‘60s were also a time of prosperity and growing membership for the organization, as well as increased organizational commitment to science and human rights. Support for the United Nations Decade for Women brought forth many important resolutions of social activism. NFTS became particularly involved in supporting the UN Convention to Eliminate Discrimination Against Women and the UN Declaration on the Elimination of All Forms of Religious Intolerance and of Discrimination Based on Religion or Belief.

[In the 21st century,] WRJ continues to be devoted to a broad spectrum of Jewish and humanitarian causes and furthers the teachings and practices of Reform Judaism. Its diversified activities include projects supporting:

- religious and family education;
- strengthening Jewish identity in Eastern Europe and the Former Soviet Union;

- the growth of Progressive Judaism in the State of Israel;
- inter-group relations; and
- a wide range of social justice and women’s issues.

When one of our co-Presidents recently had a death in her family, our Kol Ami Sisterhood arranged for some food to be delivered to her home, where the family was sitting shiva. The order had been taken over the phone, and when the package arrived, the enclosed card was signed “from The Call On Me Sisterhood!” After a good laugh, we all agreed that it was an apt name for our group (and as you have read above, an apt appellation for our parent organization, WRJ, as well). Indeed, when we have been called upon to serve our synagogue, we have done so eagerly and with love. When we have been needed, we have been there. Whether it is assisting with the Gift of Life, funding the Kol Nidre cellist, underwriting large print siddurim, or providing Shabbat onegs, planting trees in Israel, organizing the High Holidays food drive, sending out the Purim shalach manot, helping to organize rides and food for our sisters and other congregants in need, and a host of other initiatives too many to enumerate, we have heeded the call. And not only have we responded when needed, we are initiators and innovators, moving forward in new and novel directions.

Kol Ami women, we call on you to join us and be a part of the “Call On Me” Sisterhood!

Sheryl Brady

Judy Sarch

Rachel Eckhaus

### The Power of Women: Stronger Together



Reform sisterhood members take part in a demonstration for women’s suffrage, circa 1910.

#### One woman can do amazing things.

Imagine what thousands of women can accomplish. Whether you’re interested in social action projects, prayer and ritual, programs to strengthen Jewish identity, or just want to bond with women like yourself, sisterhood is for you.

Come and see what sisterhood is all about.



For more information, contact:

Judy Sarch  
565-2128

Rachel Eckhaus  
907-0097

Sheryl Brady  
761-8345

Visit us at [www.NYKolAmi.org/Sisterhood](http://www.NYKolAmi.org/Sisterhood)

FRIDAY, JANUARY 10, 2014

**Friday evening schedule :**

**5:00 pm**

Selections from "Broadway Musicals: A Jewish Legacy"

**5:30 pm**

Shabbat -in-the -Woods for children ages 2-6; followed by supervised childcare, light supper & Shabbat crafts

**6:00 pm**

Unwind with hors d'oeuvres

**6:15 pm**

Shabbat Services

**7:15 pm**

Shabbat Dinner (RESERVATIONS MUST BE MADE IN ADVANCE)

**7:30 pm**

Tzedakah sandwich making and arts and crafts

**8:00 pm**

Supervised sports and games with Coach Steve for children in grades K-6

**8:15 pm**

THE MAIN EVENT

**9:15 pm**

Relax at the end of a long day and week with dessert and coffee

**ALL EVENTS ARE FREE AND OPEN TO THE COMMUNITY WITH THE EXCEPTION OF DINNER**



# Shabbat Shira Shabbat of Song



Featuring a Concert Performance by members of the Jewish Fusion band, **"Soulfarm"**

Imagine the most joyous moments of your life. Perhaps you are smiling, perhaps you are giggling with joy. Imagine now that the joy you experience is so completely overwhelming that you burst into song. (Not just for those of you who are "Glee" fans.) Our tradition teaches us that after the Israelites crossed the Sea of Reeds, Moses and Miriam led our people in joyous song and dance. We honor our freedom and our musical joy by celebrating our special Shabbat on January 10, 2014.

This Synaplex evening will begin with a 5pm showing of selections from "Broadway Musicals: A Jewish Legacy." This will be followed by our 6:15pm service enhanced by the expressive voices of our choirs.

Our musical main event will feature a concert performance by **C. Lanzbom**, **Grammy Award** winner lead guitarist and **Noah Solomon Chase**, guitarist and lead singer. These artists are two members who form the Jewish fusion band called **"Soulfarm."** Their sound has been dubbed as New American music, full melodic song writing and progressive modern arrangements. Their live shows are full of Mediterranean flavor with captivating guitar leads and strong dance rhythms. The 2012 New York Post quotes **Soulfarm** as, "versatile, utilizing improvisation and world music."

**For further information, contact Ilene Miller at 914-949-4717 x111/ imillerkolami@gmail.com or visit www.nykolami.org**

**SAVE THE DATES FOR UPCOMING SYNAPLEX EVENTS...**  
February 28, March 15 & May 9

**CLIP & RETURN DINNER RESERVATION FORM NO LATER THAN JAN 8TH  
TO CONGREGATION KOL AMI: 252 SOUNDVIEW AVE, WHITE PLAINS, NY 10606**

**"Quiet Conversation Dinner" Adults Only**

# Adults \_\_\_\_\_ X \$25 = \$ \_\_\_\_\_

**"Community & Family Dinner"**

#Adults \_\_\_\_\_ X \$25 = \$ \_\_\_\_\_

#Children/teens \_\_\_\_\_ X \$15 = \$ \_\_\_\_\_

#Children 5 and under \_\_\_\_\_ = N/C

**TOTAL ENCLOSED** = \$ \_\_\_\_\_

**Seating is planned 2 days in advance.  
Last minute requests cannot be guaranteed.**

**Adult Name/s**

\_\_\_\_\_

**Children's Name/s & Ages**

\_\_\_\_\_

**Phone #** \_\_\_\_\_

**Email address** \_\_\_\_\_

**Please seat me with** \_\_\_\_\_

\_\_\_\_\_

## Adult Education

Please read more about offerings for the whole year in our Adult Ed brochure that was distributed during the holidays or on our website,

<http://www.nykolami.org/images/PageDocuments/ADULT%20ED%20BROCHURE%202013-14%20FINAL%20SEPT%2011.pdf>

### Spiritual Journeying Groups

#### Mussar Classes

facilitated by Rabbi Pamela Wax,  
Spiritual Care Coordinator,

Westchester Jewish Community Services  
Mondays, 12:30—2:00 pm

This workshop will introduce Mussar practice through tikkun middot ("repairing ourselves from the inside out"), so that we can act with greater compassion, kindness, and love in our homes, friendships and work.

Contact Rabbi Wax at [pwax@wjcs.com](mailto:pwax@wjcs.com) or 914-761-0600 x149 to register.

Mondays: Jan 13, Feb. 10,  
Mar 10, Apr 7, May 12, June 9  
Schulman Chapel in the Woods

#### Jewish Mindfulness Meditation

led by Ruth Rosenblum, LCSW,  
the WJCS Partners-in-Caring  
clinician for Kol Ami

Thursday mornings, 9:30 - 10:45 am  
Jewish contemplative practices for clearing the mind, softening the heart and opening to the One. All Welcome. No meditation experience necessary.  
Schulman Chapel in the Woods

#### Women in Transition

led by Ruth Rosenblum, LCSW

Are you attempting an adjustment to a major life change? Please join us in an Interactive Discussion Group. Topics to be discussed include but not limited to: retirement, widowhood, aging, changing relationships with adult children, and other life transitions (as desired). The goal of the group is to offer mutual aid in personal adjustment to life transitions, including discussion of: positive & negative aspects of individual life transitions, individual grief reactions to life change, and options that can aid personal adjustment.

Meets the 2nd & 4th Tuesday of the month in the Conference Room.

11:30 am - 1:30 pm

Space is limited and original group members have priority. If you are interested in joining the group, please contact Sheila Sturmer at [sturmersheila@gmail.com](mailto:sturmersheila@gmail.com) or 914-723-7760

### Parenting Workshops

with Susan Davis, LCSW

#### Adolescent Parenting Workshops

Discussion of a range of parenting issues related to adolescence, including physical and emotional development, trust and control issues, and staying connected in the midst of the turmoil.

First & third Thursdays of the month

First Thursday: 9:45 – 11:45 am

Third Thursday: 12:00 noon – 1:30 pm

#### Grandparenting Workshops

Exploring intergenerational experience and Jewish wisdom as we share the challenges and opportunities of grandparenting.

Meets the first Monday of the month  
9:15 - 10:45 am

#### Parent Talk!

Designed for Parents/Grandparents  
and Babies 2 - 12 months.

Topics will be related to parenting babies at this stage.

Meets the 2nd and 4th Thursday of the month (coinciding with the ECP calendar)

in the Petschek Gallery

9:00 - 10:30 am

Please call Nan Blank in the  
ECP office at 949-4717 x107

#### Sunday Parenting Group

Raising resilient, self reliant children—  
a morning discussion group for  
parents focusing on a variety of parenting  
issues and stresses.  
9:15 - 10:45 am

#### Weekly Torah Study:

Friday mornings 10:00 – 11:30 am  
Room 20

Meets every Friday except when temple is closed. Led by Kol Ami Members

### COURSES

#### Wisdom of the Sages

with Rabbi Tom Weiner

Lively discussions of the world and our lives based on some of the most provocative and fascinating texts of Jewish learning.  
All are welcome.

Tuesdays, 12:00 noon-1:00 pm in Room 20

#### Introduction to the History of Israel from Joshua in Canaan to the Monarchy

with Emily Fields

Wednesdays, 7:30 pm

A contextual study of Israel and the Middle East—then and now. If you are interested in participating, please email Emily at [efgraph@optonline.net](mailto:efgraph@optonline.net)

### Current Events

with Beth and Gene Kava

Each session will provide the participants an opportunity to examine a current issue of the day in depth. Each session will begin with an overview of the issue. Participants will examine issues, through various perspectives, using readings, video or a guest speaker.

Mondays, 11:00 am - 12:30 pm in Room 20

Feb 3 & 24, Mar 3 & 17,

Apr 7 & 28, May 5 & 19

#### The Hebrew Prophets

Mondays 7:30 – 8:30 pm  
Room 20

Led by Kol Ami Members

The bible chronicles the history of the Hebrew people from approx. 740 BCE to 520 BCE through the eyes and hearts of the prophets, from Isaiah to Malachi. Who are these men? How do they see their world? What are their messages and are they relevant today? We will explore these questions and more. Contact Paul Davis at [paullawrencedavis@yahoo.com](mailto:paullawrencedavis@yahoo.com)

#### Free University

Start a study group, discussion group or seminar at Kol Ami. Cover any topic that falls under the broad umbrella of Reform Judaism. Adult Ed will vet, advertise and coordinate. Contact Paul Davis at [paullawrencedavis@yahoo.com](mailto:paullawrencedavis@yahoo.com)

### Other Items of Interest

#### Lunch and Learn in New York City

with Rabbi Tom Weiner

Issues ancient and modern with texts, ancient and modern.  
Dates to be announced soon

#### Women's Roundtable Breakfasts

with Rabbi Shira Milgrom

Wed., 7:45-9:00 am  
1/15, 2/5, 3/5, 4/2 & 5/7

#### Mah Jongg

Open To All: Experienced and Novice  
Wednesdays 11:30 am in the Kol Ami Atrium  
Email Wendy Roos [Wendyroos1@aol.com](mailto:Wendyroos1@aol.com)  
to be added to the email distribution

#### Bridge

Open to All  
Wednesdays, 11:30 am  
in the Kol Ami Atrium

## Kol Ami Reads Book Club

### *The Death of Ivan Ilyitch*

by Leo Tolstoy  
January 8, 2014

### *My Beloved World*

by Sonia Sotomayor  
February 5, 2014

### *The Yellow Birds*

by Kevin Powers  
March 5, 2014

### *Continental Drift*

by Russell Banks  
April 2, 2014

All meetings are on the first Wednesday of the month at 9:15am in Room 20.  
Come whether you've read the book or not; the discussion is always lively.

For further information,  
contact Doris Dingott, 289-0869, DLDingott@gmail.com or  
Elaine Cohen, 725-0248, elwilco@verizon.net

## MITZVAH KNITZ

We will be meeting on  
**Thursday**  
**JANUARY 16**  
**from 11:00 am**  
**to 1:00 pm.**

Join us.  
Knitters of all skill levels  
are welcome.  
For further information,  
call Elaine Cohen,  
725-0248 or  
elwilco@verizon.net

## Adult Education *continued*

### Westchester Adult Jewish Education at Kol Ami:

A discussion of Jewish Ethics.  
with Dr. Carol Diamant

Please see the Adult Education brochure for more details  
or [CLICK HERE](#)  
for a listing of all their programs.

### Welcome to Kol Ami's Winter Jewish Film Festival—Monday Movies Screenings of Israeli films and films with Jewish content

#### The January 13th film will be *The Attack*

Set in modern day Tel Aviv, an Arab surgeon learns a devastating secret about his wife in the aftermath of a suicide bombing.

#### The February 10th film will be *Hava Nagila (The Movie)*

*Hava Nagila (The Movie)* is a documentary romp through the history, mystery and meaning of the great Jewish standard. Featuring interviews with Harry Belafonte, Leonard Nimoy, Connie Francis, Glen Campbell, Regina Spektor and more, the film follows the ubiquitous party song on its fascinating journey from the shtetls of Eastern Europe to the kibbutzim of Palestine to the cul-de-sacs of America. High on fun and entertainment, *Hava Nagila (The Movie)* is also surprisingly profound, tapping into universal themes about the importance of joy, the power of music and the resilient spirit of a people.

#### The March 17th film will be *Fill the Void*

This film tells the story of an Orthodox Hassidic family from Tel Aviv. Eighteen-year-old Shira is the youngest daughter of the family. She is about to be married off to a promising young man of the same age and background. It is a dream-come-true, and Shira feels prepared and excited.

### Hebrew Classes for Adults\*

Pending sufficient enrollment

#### Hebrew Classes for Adults

Sunday Mornings  
with Emily Fields

#### Advanced Beginners Adult Hebrew

10:00 am – 11:00 am

#### Intermediate Adult Hebrew

11:15 am – 12:15 pm

Cost: \$175

Please contact Emily at  
efgraph@optonline.net if you  
are interested in attending or  
require additional information

#### Intermediate/Advanced

Conversational Hebrew, grammar,  
vocabulary, reading, and translating  
current Israeli publications.

An informal learning environment.

Alice Seidman

Sundays, 9:30 am

Contact Alice Seidman at 953-8455  
for further information

*Classes meet when Religious School is in session*

## We gratefully acknowledge your generous contributions

### Rabbi Shira Milgrom's Discretionary Fund

- In appreciation, Ethel and Murray Shapiro
- In memory of Hannan Wexler, from Barbara Block, Marian and Ed Steinberg
- Thank you for your support during Jerry's recovery, from Roberta Norman
- For the ECP January Bookshare, from Cori Adelman and Peter Shirfrin and Elizabeth and Daniel Mueller
- In memory of my father, Abe Latts, from Lois Eil
- In celebration Lexi Weiss's baby naming, from Rebecca and Michael Weiss
- In memory of Rhoda Fischman, from Adele and Len Lewis
- In memory of my mother, Marion Sheff, from Barbara Block
- In appreciation and in memory of Alfred Shasha, from the Shasha Family
- In memory of my father, from Mimi Miller
- In memory of Elaine Lee, from Ronni and Donald Lee
- In memory of Rhoda and Lenny Fischman, from Alice Seidman
- In honor of our granddaughter Eleanor's baby naming, from Rayna and Phillip Zeidenberg

### Rabbi Tom Weiner's Discretionary Fund

- In honor of Andy's Bar Mitzvah, from Jane and Jay Cohen
- In honor of Perri's Bat Mitzvah from, Jonathan Thaler and Marjorie Rosenblatt Thaler
- In memory of Joseph Weiner, from Mattie Abler, Ed and Marian Steinberg, Elaine Libman, Lisa Borowitz, David and Marilyn Rivkin, Gene and Beth Kava, Emily, Jeff and Michael Goodwin, Jamie, Ivy, Sean and Brandon Barr, Florence Glazer, Barbara Block, Robin Cohen, Judith and Jeff Gelfand, Harley Lewis, Debra and Anthony Zitrin
- In memory of my husband, Dr. William Karliner, from Edith Karliner
- In memory of Amir Manocherian, from Rosita Manocherian and Family
- In honor of Anna's Bat Mitzvah, from Pam and Paul Rubin
- In honor of Nathan's Bar Mitzvah, from Elizabeth and Andrew Ward
- In memory of my husband, Bill Waldorf, from Barbara Waldorf
- In honor of Andrew's Bar Mitzvah, from, Jay and Jane Cohen
- In honor of Perri's Bat Mitzvah, from Marjorie Rosenblatt Thaler and Jonathan Thaler
- In memory of Joseph Weiner, from Mattie Abler, Elaine Libman, Lisa Borowitz, Beth and Gene Kava, Emily, Jeff and Michael Goodwin, Barbara Block, Robin Cohen, Judith and Jeff Gelfand, Harley Lewis, Marilyn and David Rivkin, Debra and Anthony Zitrin, Madeline and Sandy Zevon, Feldman Family
- In memory of my dad, Robert Goldwater, from Robert Goldwater, Jr.
- In memory of my mother, Marian Sheff, from Barbara Block

### Cantor Mo Glazman's Discretionary Fund

- In memory of Valerie Heim from Lisa Borowitz
- In appreciation, from Gene and Beth Kava
- In honor of Perri's Bat Mitzvah, from The Thaler Family

### College Fund

- Ken Jurist, Gail Young and Family

### Kol Ami Fund

- In loving memory of Joseph K. Weiner, father of Rabbi Tom Weiner and grandfather of Samantha Weiner from Leslie and Steve Heineman, David and Karen Cole
- In appreciation of our child's Bris from Mr. and Mrs. Michael Meyer
- In loving memory of Valerie Heim from David and Marilyn Rivkin, and David and Karen Cole
- In loving memory of my husband Rabbi Tzvi from Judith Goldman
- In appreciation from Susan Sachs, daughter of Rhoda Fischman
- In loving memory of Elinor Pohl, mother of Cathy Pohl Lee from Joanne Ruckel, William Potter and Janice and Ira Starr
- In loving memory of Dr. Collingwood Karmody, uncle of Melanie and Adam Gluck from David and Karen Cole
- In memory of my mother, Rose Rutfield from Pearl Cohen
- In memory of Cecilia Brody from Sandra and Michael Mason

### Fund for the Needy

- In loving memory of Joseph K. Weiner father of Rabbi Tom Weiner from Marjorie Bruckman, Ellen Bittner, Nell and Victor Wyler
- In loving memory of Valerie Heim for dedication to Kol Ami from Beth and Gene Kava, Eleanor and Harry Fleisch
- In loving memory of Elaine Lee mother of David Lee from Bernice Brussel and Anne Brooks
- In loving memory of Elinor Pohl mother of Cathy Pohl Lee from Mattie Abler, Bernice Brussel, Anne Brooks, and Flora Pollak
- In loving memory of Ray Sarch from Ethel and Murray Shapiro

### ECP Fund

- In loving memory of my father Robert Goldwater from Robert D Goldwater

### Annual Fund

- In loving memory of Hannan Wexler, husband of Barbara Wexler, from Barbara and Bob Sandler

### Music Fund

- In loving memory of Valerie Heim from Mattie Abler, Anthony and Debra Zitrin

### Adult Education Fund

- In appreciation of Kol Ami opening its doors to the Mah Jongg group from Eileen Prichep

### People To People Fund

- In loving memory of Joseph K. Weiner from Patty and Bert Wohl
- In loving memory of Valerie Heim from Mimi Feinberg, Patty and Bert Wohl

### College Youth Fund

- In loving memory of Joseph K. Weiner, father of Rabbi Tom Weiner from the Jurist/Young family
- In loving memory of Valerie Heim from Stephen Post and Melinda Krieger-Post

### Flower Fund

- In appreciation from Ginny and Brian Ruder

### Library Fund

- In loving memory of Hannan Wexler, husband of Barbara Wexler, from Anne and Gil Stearns

### Barbara Gruber Scholarship Fund

- In memory of Dan Sarch's father from Joyce and Alan Goldman, Robin Cohen
- In memory of Ken Worth's father from Mimi and Stan Rogowsky
- In memory of Hannan Wexler from Sue and Ken Simon, Mimi and Stan Rogowsky
- In memory Roger Stern's father from Mimi and Stan Rogowsky
- In honor of Shira and David's newest granddaughter Lefett from Sue and Ken Simon, Mimi and Stan Rogowsky

## CONGRATULATIONS

- To Rabbi Shira Milgrom and Dr. David Elcott on the birth of Lefett Sheinbein-Milgrom daughter of Yaron and Miriam Sheinbein-Milgrom

## CONDOLENCES

- To Karen Millman on the death of her mother Barbara Kamen
- To Linda Kernanshahchi on the death of her Uncle Dr. Frank Noban.
- To Warren Kahn on the death of his wife Carol.
- To Barbara Wexler on the death of her husband Hannan.
- To Kevin Worth on the death of his father Robert.
- To Nathaniel Bohrer on the death of his father Harry Bohrer

## In Memoriam Carol Kahn Hannan Wexler

## Ensure Your Family Gets the Care They Deserve.

For more information, please  
call us at 800-567-3646 or visit  
HebrewHome.org

We adhere to the highest standard of Halacha.

THE  
HEBREW  
HOME<sup>AT</sup>  
*Riverdale*

SUNDAY	MONDAY	TUESDAY	WEDNESDAY	THURSDAY	FRIDAY	SATURDAY
		<b>Dec. 31</b>	<b>1</b>	<b>2</b>	<b>3</b>	<b>4</b>
		NEW YEARS EVE RS CLOSED ECP CLOSED	NEW YEARS DAY RS CLOSED ECP CLOSED OFFICE CLOSED	ECP CLOSED 9:45am Teen Parenting 7:45pm Congregational Choir	ECP CLOSED 5:30 pm SHABBAT IN THE WOODS in Gallery 6:15 pm SHABBAT EVENING SERVICE in Sanctuary	SPIRITUAL LIFT in Chapel 9:00 am Coffee & Community 9:30 am Study 11:00 am SERVICE
<b>5</b> RELIGIOUS SCHOOL 9:15am Parenting with Susan Davis	<b>6</b> 9:00am ECP Opens 9:15am Grandparenting Workshop 12:30pm Mussar class 7:30pm Prophets Class	<b>7</b> 7:00pm Purim Spiel Rehearsal 7:30pm WRJ Meeting	<b>8</b> RELIGIOUS SCHOOL 9:00am Kol Ami Reads 6:00pm Or Chadash Rehearsal	<b>9</b> 7:30pm Exec Meeting 7:45pm Congregational Choir	<b>10</b> 10:00am Torah Study: Portion of the Week SYNAPLEX – SHABBAT SHIRA 5:30 pm SHABBAT IN THE WOODS in Gallery 6:15 pm SHABBAT EVENING SERVICE in Sanctuary	<b>11</b> SPIRITUAL LIFT in Chapel 9:00 am Coffee & Community 9:30 am Study 11:00 am SERVICE 5:30 pm SHABBAT AFTERNOON SERVICE: Bat Mitzvah of Hailey Faust in Sanctuary
<b>12</b> RELIGIOUS SCHOOL 9:00am 6th Grade B'nai Mitzvah Workshop 9:00am Kol Ami Cares 11:30am Cooking For the Homeless 4:00pm MLK CONCERT at Memorial United Methodist Church	<b>13</b> 11:00am Current Events 12:00pm Cooking For The Homeless 7:30pm Prophets Class 7:30pm Winter Movies	<b>14</b> 11:30am Transitions 7:00pm Purim Spiel Rehearsal 7:30pm Financial Task Force	<b>15</b> RELIGIOUS SCHOOL 7:30am Round Table Breakfast 10:00am WAJE 6:00pm Or Chadash Rehearsal	<b>16</b> TU B'SHVAT 12:00pm Teen Parenting 7:00pm Worship 8:00pm Board of Trustees	<b>17</b> 10:00am Torah Study: Portion of the Week 5:30 pm SHABBAT IN THE WOODS in Gallery 6:15 pm SHABBAT EVENING SERVICE in Sanctuary	<b>18</b> SPIRITUAL LIFT in Chapel 9:00 am Coffee & Community 9:30 am Study 10:30 SHABBAT MORN- ING SERVICE Bat Mitzvah of Charlotte Brown in Chapel
<b>19</b> NO RELIGIOUS SCHOOL	<b>20</b> OFFICE CLOSED RS CLOSED ECP CLOSED	<b>21</b> 7:00pm Purim Spiel Rehearsal	<b>22</b> NO 7th-12th Grade CLASSES 10:00am WAJE 4:00pm 4th-6th Grade Religious School 6:00pm RS Faculty Development 6:00pm Or Chadash Rehearsal	<b>23</b> 7:45pm Congregational Choir	<b>24</b> 10:00am Torah Study: Portion of the Week 5:30 pm SHABBAT IN THE WOODS in Gallery 6:15 pm SHABBAT EVENING SERVICE in Sanctuary 7:00pm PRIDE DINNER	<b>25</b> SPIRITUAL LIFT in Chapel 9:00 am Coffee & Community 9:30 am Study 11:00 am SERVICE 3:30pm 4th GRADE HAVDALLAH HISPANICA
<b>26</b> RELIGIOUS SCHOOL 9:00am 2nd Grade Book Club 9:00am Religious School Committee Meeting 9:15am Interfaith in chapel 11:30am Jr.Youth Group Event 1:00pm ECP FAMILY CONCERT – FRIENDS WITH SHIRA	<b>27</b> 11:00am Current Events 7:30pm Prophets Class	<b>28</b> 11:30am Transitions 7:00pm Purim Spiel Rehearsal 8:00 pm Adult Bar/Bat Mitzvah Class	<b>29</b> RELIGIOUS SCHOOL 10:00am WAJE 4:00pm 6th Grade Art with Avi 6:00pm Or Chadash Rehearsal 6:30pm 8th Grade Art with Avi	<b>30</b> 7:45pm Congregational Choir	<b>31</b> 10:00am Torah Study: Portion of the Week 5:30 pm SHABBAT IN THE WOODS in Gallery 6:15 pm SHABBAT EVENING SERVICE in Sanctuary 6:15pm 3rd GRADE FAMILY SHABBAT & DINNER	<b>Feb. 1</b> SPIRITUAL LIFT in Chapel 9:00 am Coffee & Community 9:30 am Study 10:00am 6th GRADE B'NAI MITZVAH WORKSHOP, SHABBAT & BRUNCH 11:00 am SERVICE 4:00pm WINE & WISDOM 5:30 SHABBAT AFTER- NOON SERVICE: Bat Mitzvah of Eva Gilbert in Sanctuary



Sending Purim greetings and contributing to tzedakah at the same time is a great way to celebrate Purim and let friends, family and teachers know that you are thinking of them.

Go to [www.PurimProject.com](http://www.PurimProject.com) by February 17th

*Your user name and password will be mailed mid-January  
and baskets will be delivered the week before Purim.*



Questions? Contact Judy Sarch at 565-2128

**The one name  
to remember...**



**BALLARD-DURAND**

FUNERAL & CREMATION SERVICES

www.BallardDurand.com

**When it's time  
to remember.**

White Plains

**914-949-0566**

Elmsford

**914-592-6300**



Find us on Facebook

©2013 MKJ Marketing

**February  
Connection Deadline**

**January 17, 2014**

**Congregation Kol Ami**  
A Reform Synagogue  
(914) 949-4717

*A Member of the  
Union for Reform Judaism*

**Rabbis**

**Shira Milgrom**  
328-4549

**Tom Weiner**  
684-6991

**Cantor:**

**Mo Glazman**

**Exec. Director:**

**Jane S. Friedberg**

**Religious School**

**Director:**

**Felice Miller Baritz**

**ECP Director:**

**Nan Blank**

**Program Manager:**

**Ilene Miller**

**President:**

**Hank Rouda**

**Rabbis  
Emeriti:**

**Lawrence W. Schwartz\***

**Maurice Davis\***

**Mark L. Winer**

**Cantor Emeritus:**

**Raymond Smolover**

*\*of blessed memory*



C O N G R E G A T I O N

**KOL AMI**

252 Soundview Avenue, White Plains, NY 10606 / 914-949-4717 Fax 914-946-8143

Non Profit  
U.S. Postage  
PAID  
White Plains, N.Y.  
Permit No. 492